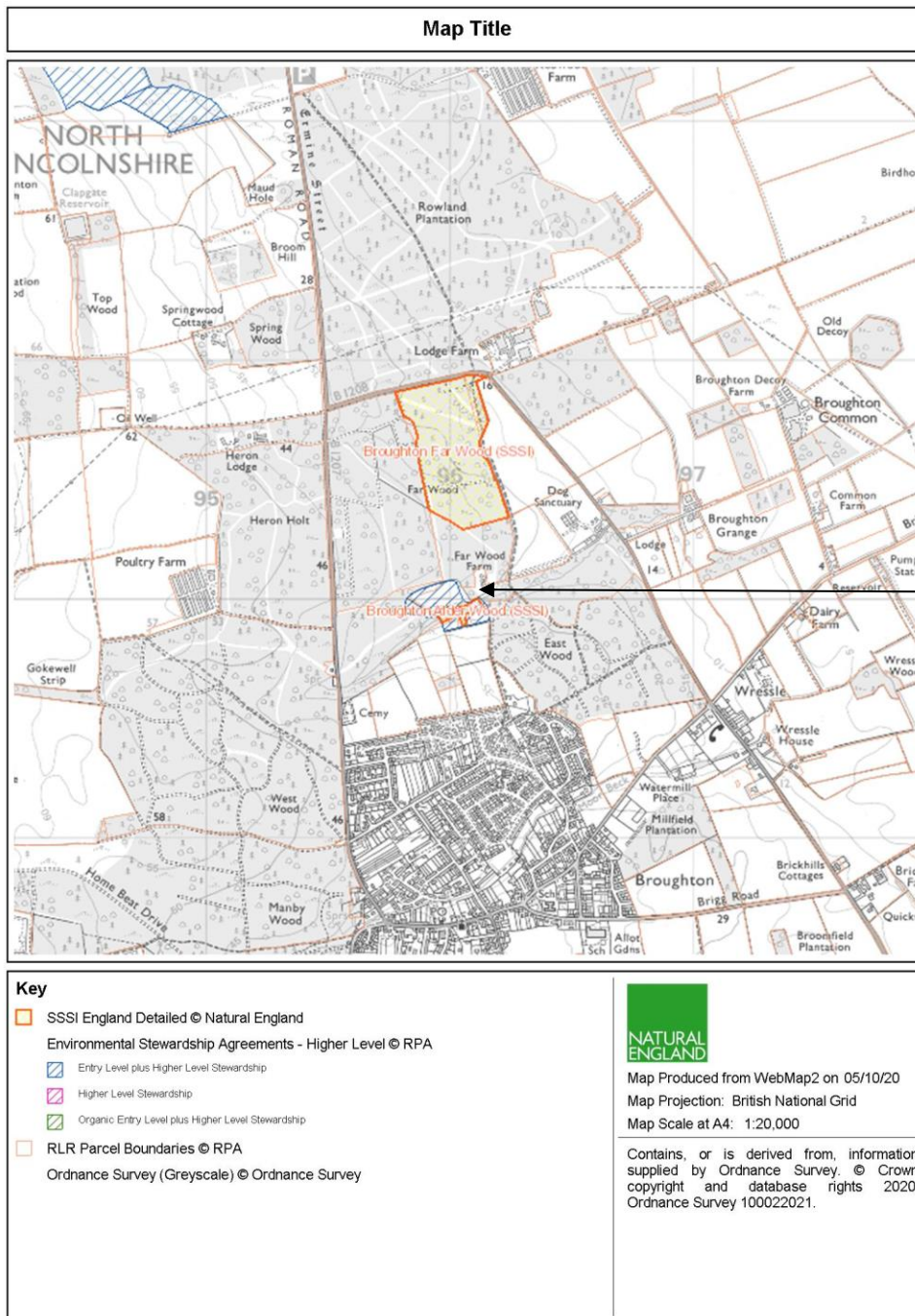


# FAR WOOD FARM

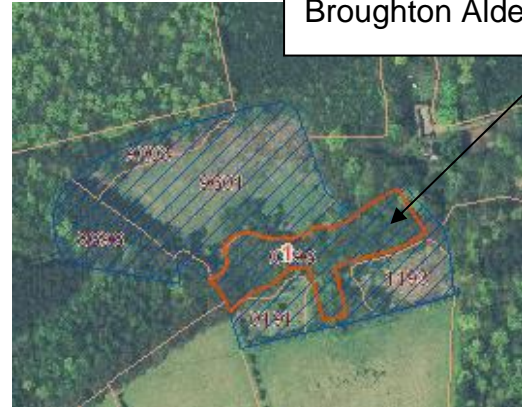
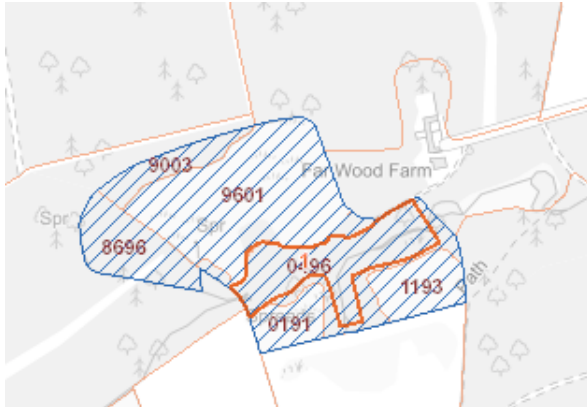
## HIGHER LEVEL STEWARDSHIP AGREEMENT and SSSI

### Location map



## HLS agreement and SSSI land for sale:

Blue hash = parcels within the HLS agreement. Red boundary = SSSI



## HLS options:

RLR field number	Field name	RLR field size (ha)	OPTIONS		
			Code	Description	Quantity (ha/100m/no.)
SE95098696		0.52			
SE95109003		0.27	HC15	Maintenance of successional areas and scrub	0.27
			HR4	Supplement for control of invasive plant species	0.27
			HR5	Bracken control supplement	0.15
			HR7	Supplement for difficult sites	0.27
SE95109601		1.65	EK3	Permanent grassland with very low inputs: outside SDA & ML	0.91
			A13	Non payment option - permanent grassland for Article 13	1.52
			HC8	Restoration of woodland	0.25
			HK7	Restoration of species-rich, semi-natural grassland	0.49
			HK7	Restoration of species-rich, semi-natural grassland	0.91
			HR4	Supplement for control of invasive plant species	1.65

RLR field number	Field name	RLR field size (ha)	OPTIONS		
			Code	Description	Quantity (ha/100m/no.)
			HR5	Bracken control supplement	0.20
			HR7	Supplement for difficult sites	1.65
SE96090191		0.26	HC10	Creation of woodland outside of the SDA & ML	0.26
SE96090496		1.16	HC8	Restoration of woodland	0.90
			HC10	Creation of woodland outside of the SDA & ML	0.27
			HR4	Supplement for control of invasive plant species	0.90
			HR7	Supplement for difficult sites	0.90
SE96091193		0.38	HC10	Creation of woodland outside of the SDA & ML	0.38

The HLS agreement runs until 31 October 2023. The SSSI designation is in perpetuity.

For more information about the SSSI and the HLS agreement please contact Morwenna Christian, Natural England. [Morwenna.christian@naturalengland.org.uk](mailto:Morwenna.christian@naturalengland.org.uk)