

On instructions from C W Parker (Wainfleet) Limited

PINCHBECK FARM, SEA LANE, WAINFLEET ST MARY SKEGNESS, PE24 4BA



**TRACTORS, JCB LOADALL, POTATO EQUIPMENT, RANGE OF
TRAILERS, SUGAR BEET & CULTIVATION EQUIPMENT,
GENERAL FARM MACHINERY & MISCELLANEOUS ITEMS**

**FOR SALE BY PUBLIC AUCTION
11.00AM SATURDAY 25 FEBRUARY 2023**

Eastfield, Albert Street, Brigg, North Lincolnshire, DN20 8HS
Telephone: 01652 653669



i-bidder.com
live auctions

BidSpotter.co.uk

Website: www.ddmagriculture.co.uk
E-mail: enquiry@ddmagriculture.co.uk

Incorporating

JH Pickup & Co



PINCHBECK FARM, SEA LANE, WAINFLEET ST MARY, SKEGNESS, PE24 4BA

SATURDAY 25 FEBRUARY 2023

SITUATION

A location plan is printed on the rear cover of this catalogue and "To the Sale" signs will be erected on the sale day.

What3words - dates.prettiest.bidder

VIEWING

The lots will be available for inspection on the morning of the sale from 8.00 am and on Friday 24 February 2023 from 12.00 noon until 4.00 pm. Earlier inspection of specific lots can be arranged by appointment with the Auctioneers.

CONDITIONS OF SALE

The auction will be conducted in accordance with the conditions of sale printed within this catalogue. **Please note: Purchasers will pay 5% commission plus VAT over and above the purchase price. Purchasers via I-Bidder/Bidspotter will pay 6.5% commission plus VAT.**

VALUE ADDED TAX

VAT will be levied at the appropriate rate on the purchase price of all items, where applicable.

COMMISSION BIDS

The Auctioneers will be pleased to execute written commissions on behalf of any person unable to attend the sale. For further details please contact the Auctioneers.

PAYMENT

At the fall of the hammer all lots shall be at the risk of the purchaser. All lots must be paid for prior to removal unless specific payment arrangements are made and all buyers are encouraged to pay by bank-to-bank electronic transfer. Cash and cheques will be accepted but **we do NOT accept any form of card payment.**

BUYERS NUMBERS

All potential purchasers not already registered with DDM Agriculture are requested to register with the Auctioneers Clerks by giving their full name, address and telephone number. They will then be allocated a permanent Buyers Number for this sale and all future DDM/Sreetons Agriculture or JH Pickup & Co auctions.

LOADING

There will be loading facilities on site to assist with the loading of Lots up until 5.00pm on Saturday 25 February 2023. This facility is provided entirely at the risk of the purchaser, who must be responsible for supervision. The Auctioneers accept no liability whatsoever.

ONLINE BIDDING

Live online bidding will be available at this sale via ibidder.com or bidspotter.co.uk. We recommend that you register for online bidding before the day of the sale. DDM Agriculture accepts no liability for any loss of connectivity and the ability to bid on the day of the sale.

FURTHER INFORMATION

For further information please contact Tori Heaton on (01652) 653669. On the day of the sale the Auctioneers can be contacted on 07970 126304 - Tori, 07970 126302 - Tony, 07970 126300 - Giles, 07435 550274 - Charlotte, 07920 232135 - Tom, 07733 706292 - Cecilie or 07970 126303 - Andrew.



PINCHBECK FARM, SEA LANE, WAINFLEET ST MARY, SKEGNESS, PE24 4BA
SATURDAY 25 FEBRUARY 2023

TRACTORS

- 2000 John Deere 6810 four wheel drive c/w Powershift gearbox, 125hp, X194 HCT
air conditioned cab, front linkage, 420/85 R24 front & 420/85 R38 rear tyres.
13,900 hours
- 1999 John Deere 6810 four wheel drive c/w Powershift gearbox, 125hp, T163 JXL
air conditioned cab, front linkage, 16.9 R24 front & 460/85 R38 rear tyres.
Full service history. 11,300 hours
- 1997 John Deere 6800 four wheel drive c/w Powershift gearbox, 120hp, R914 ECT
front pto, air conditioned cab, front linkage, 380/85 R24 front &
420/85 R38 rear tyres.
10,300 hours

TELESCOPIC HANDLER & CRAWLER

- 2004 JCB Loadall 540-70 four wheel drive & steer c/w Q-Fit, 30K FX54 FVB
transmission, 440/70 R28 front & rear tyres, 4,400 hours since
new engine fitted.
Pallet Tines (to fit above).
International Crawler c/w Blade.

TRAILERS

- 2 no. 2000 Larrington JTF Rootking 14 tonne steel bodied tandem axle hydraulic tipping Trailers
c/w flotation tyres, hydraulic tailgates & front inspection ladders (Serial Nos. 508RL98
& 501RL98).
- 8 tonne aluminium ex-lorry bodied tandem axle hydraulic tipping Trailer (homemade).
- 8 tonne aluminium ex-lorry bodied tandem axle hydraulic tipping Trailer (homemade) c/w silage
sides.
- 2 no. 4 wheel "bomb" Trailers c/w wooden folding side panels.

SUGAR BEET EQUIPMENT

- CTM 180 Sugar Beet Cleaner c/w euro system.
- Brettenbridge 180 Sugar Beet Cleaner.
- Sugar beet Sheets.



PINCHBECK FARM, SEA LANE, WAINFLEET ST MARY, SKEGNESS, PE24 4BA
SATURDAY 25 FEBRUARY 2023

POTATO HARVESTING EQUIPMENT

- 2016 Grimme GT170 2 row Potato Harvester c/w RLS rollers, Multisep, camera system, self levelling steering wheels & picking off table (Serial No. 45001917).
- 2007 Grimme GT170 S Potato Harvester c/w digger & main web, Dahlman rollers, Multisep & water kit.
- 2005 Grimme GZ 1700 DLS 2 row Potato Harvester c/w pto, RLS rollers, , driven & steering axle, picking off table & Wavey web (Serial No. 44201118).
- 2016 Grimme HSA 75-2 2 row Haulm Topper c/w pto (Serial No. 1836).
- 2005 Grimme KS 1500 A 2 row Haulm Topper (Serial No. 81820552).
- Selection of Grimme spare Webs.

POTATO EQUIPMENT

- 2018 Baselier Rotary Tiller c/w hydraulic depth control, front & rear crumbler rollers & rear depth wheels (Serial No. HFD6FKV550).
- 2013 Standen Baselier 4 row tiller/row Bed Former c/w guttler roller & ridge formers.
- 2005 Struik 4 row tiller/row Bed Former c/w cage roller & ridge formers (Serial No. 0128505).
- Koningsplanter Controller 2000 4 row belt Potato Planter c/w pto (Serial No. 10035001).
- Standen Pearson H Series Potato Planter c/w amistar kit & dosing unit.
- Nemathorin 4 row 6m Applicator (homemade).
- Ferri Pulverisor.
- 2019 Tong big bag Potato Filler c/w weigher.
- 2015 ABC Agrimec Stitcher.
- 2015 Peel flat belt Conveyor.
- 2014 Manter M10 XL Weigher.
- 2014 Tong swan neck Elevator.
- 2005 Symach potato bag Stacker.
- 2000 Tong Coil Caretaker Grader c/w hopper, cleaning coils, square riddle & picking off belts.
- 2000 Marray potato Weigher c/w bag filler & stitcher.
- Pearson triple Bagger.
- Triple Bagger.
- Tong roller Table.
- Roller Table.
- Elevator (small).
- Qty of 1 tonne potato Bags.
- Qty of potato chitting Lights.
- Qty of chitting Trays.

PINCHBECK FARM, SEA LANE, WAINFLEET ST MARY, SKEGNESS, PE24 4BA
SATURDAY 25 FEBRUARY 2023



SCAN ME
For Catalogue
Lot List
Further Information



PINCHBECK FARM, SEA LANE, WAINFLEET ST MARY, SKEGNESS, PE24 4BA
SATURDAY 25 FEBRUARY 2023



DDM Agriculture and J H Pickup & Co are now a leading firm of rural practice Chartered Surveyors, operating primarily in Lincolnshire, Yorkshire and Nottinghamshire. Our dynamic and experienced team has a diverse skill set, ensuring we offer clients up-to-date expertise on a wide range of topics, tailored to individual requirements.

We are *passionate* about and *specialists* in:-

Strategic Planning

With a proven track record of success, our 'end-to-end' planning services to landowners include:-

- promotion of land through the local plan process, to secure allocation;
- preparation and submission of planning applications;
- negotiation of option and promotion agreements with developers; and
- marketing and negotiation of sale of development sites.

Solar, Renewable and Energy Projects

As one of the leading specialists in the country, therefore having the benefit of being actively involved in numerous negotiations throughout both England and Scotland, we provide advice that is current and reflects the continually changing face of the energy sector. The potential opportunities this sector offers can be very significant for any size of business so our expert advice is essential, from the outset.

Utility & Infrastructure Schemes

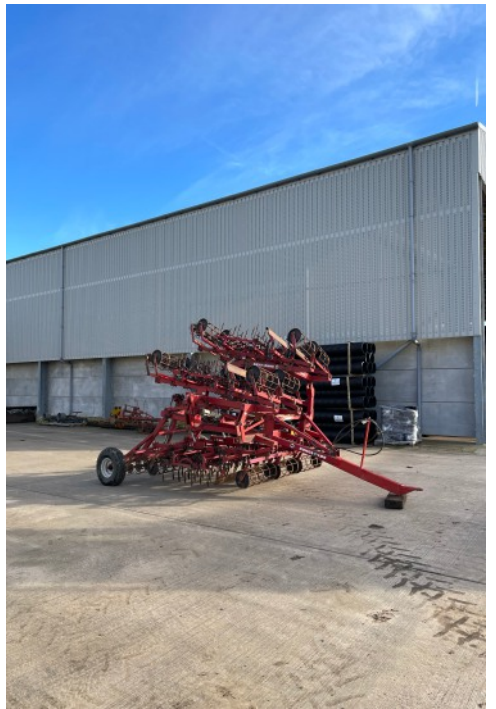
There are a significant number of major utility upgrade programmes and new infrastructure projects ongoing across the region. We are highly experienced in the complexities of such works, able to assist you throughout. We can help you understand and potentially influence the impacts upon you and your business at the outset, advise as to your legal rights and obligations, help you with the effects of physical implementation of the works and always ensure you receive the full compensation you are entitled to.

Stewardship & ELMS

We assist in the identification of stewardship opportunities and submission of applications for the correct level of scheme to suit individual circumstances. The emerging ELMS scheme will offer many opportunities but selecting the correct options and completing the documentation can be daunting so our team of specialists are available to assist.

If you wish to discuss your own requirements, please contact a member of the team on
01652 653669 or 01302 714399.





PINCHBECK FARM, SEA LANE, WAINFLEET ST MARY, SKEGNESS, PE24 4BA
SATURDAY 25 FEBRUARY 2023

CULTIVATION EQUIPMENT

2001 Vaderstad Rexius Twin 630 6.3m combination Cultivator.
1999 Simba C Series 23C 4.4m trailed Disc Harrows c/w hydraulic folding, rear draw bar including hydraulic service (Serial No. 89289049).
1999 Simba 4.6m Cultipress c/w double D packer & levelling boards (Serial No. 90659069).
Bomford 6m Drag c/w end tow kit.
Kongskilde Germinator SP6000 hydraulic folding Cultivator c/w rotakrats (Serial No. 01207061)
R G Gethring & Son 4m Press c/w end tow kit.
2014 Kuhn 4m folding combi Drill c/w HR4004 Power Harrow & TF1500 front hopper.
Kverneland/Maschio 4m combination Drill c/w Suffolk coulters (Serial No. 44252).
2014 Cousins HD Contour 12m 5 gang Cambridge Rolls c/w 24 inch rings with breakers
1994 KB Hurst 4.2m Cambridge Roll c/w end tow kit.
2011 Opico HD Roller 6.3m Rolls c/w horizontal fold (Serial No. 342239).
Dalbo 4m Rolls c/w hydraulic folding & breaker rings.
Cambridge gang Rolls.
Solid 4m Cambridge Rolls.
4m end tow Cambridge Rolls.
2008 2m x 3m Guttler Roller.
Simba Solo 3m Cultivator c/w new DD packer (Serial No. 104570062).
3 leg flat Lift.
Conventional 3 furrow Plough c/w offset frame.
Stanhay Rowcleaner R60 5 row front mounted vegetable Hoe.
4m Press.
Spring tine Harrow.

GENERAL FARM MACHINERY

2017 Amazone ZA-TS 4200L fertiliser Spreader (Serial No. ZA00006394, dealer serviced).
2016 Amazone ZA-TS 4200L fertiliser Spreader (Serial No. ZA00003599, dealer serviced).
Swift Lift InterStore 11.5m rubber belted grain Elevator (Serial No. SL-I130T1476).
Parmiter 27 ft grain Elevator (Serial No. 106.2.21).
Carrier grain Elevator.
Fyson rubber belted grain Elevator (Serial No. VR7587).
Westfield WR100-51 15m tripod grain Auger (Serial No. 205048).
Grain Pusher.
8ft high, 26m long grain Tunnel c/w fan & motor.
2006 rounded grain Laterals.
2004 McConnell 4m folding grass Topper.
Irrigaton Pump (towable).
Lely 4m Sprayer.
Forklift box Tippler.
Stocks Halftracks c/w front wheels.



**PINCHBECK FARM, SEA LANE, WAINFLEET ST MARY, SKEGNESS, PE24 4BA
SATURDAY 25 FEBRUARY 2023**

WHEELS/TYRES

Quantity	Size		Quantity	Size	
2	230/95 R44	Complete Wheels	2	18.4 R38	Tyres
1	18-19.5	Tyre	2	24" Rims	For Dual Wheels
3	235/85 R16	Tyres	2	14.9 R28	Dual Wheels
1	235/75 R15	Tyre	2	48x25.00-20	Tyres & Rims
2	205/80 R16	Tyres	2	14.9 R24	Dual Wheels
1	7.5-20	Complete Wheel	2	18.4 R38	Dual Wheels
2	7.5-20	Tyres	1	550/60 R22.5	Wheel
4	10.0-20	Complete Wheels	1	550/60 R22.5	Tyre
5	7.5-10	Complete Wheels	1	500/60 R22.5	Tyre
1	7.5-10	Tyre			
1	500/85 R30	Tyre			
1	11.0-16	Complete Wheel			
2	66 x 43.0-25	Complete Wheels			
2	13.6 R38	Complete Dual Wheels			
2	16.9 R38	Complete Dual Wheels			
2	18.4 R38	Complete Dual Wheels			
1	15.5-25	Tyre			
2	12.4 R46	Complete Wheels			
2	9.5 R32	Complete Wheels			
4	600/55 R22.5	Complete Wheels			
2	16.9 R28	Tyres			
1	750/65 R26	Tyre			

Box of assorted car Tyres.

Box of assorted industrial Tyres.

MISCELLANEOUS ITEMS

1991 Mastenbroek MSZ 250 2.5m Reeding Basket (Serial No. 1027).

Fendt 1800kg front Weight.

Fendt 870kg front Weight.

Digger Shear (to fit 14 tonne machine).

3 no. gas Guns.

Dust Extractor.

Pettit Ramps.

Pettit trailer Doors.

Pettit trailer Body.

Qty of Timber.

Qty of metal & wooden Gates.

Vista 3 berth static Caravan.

Bogie Wheel.

Vintage weighing Scales c/w weights.

Qty of Slates.

Qty of roll Crimps.

Nuffield Engine.

Grain Pipes.

Qty of Bricks.

Qty of combine Spares.

Qty of sprayer Spares.

Various pallets of spare Parts.

Workshop Spares.

Conditions Of Sale

1. In accordance with the Lincolnshire, North Lincolnshire and North East Lincolnshire custom, the Purchaser shall pay 5 per cent commission in addition to the purchase price.

2. All lots-which term shall include all forms of personal property whatsoever and property fitted or affixed to land - are tendered for sale subject to these Conditions, no variation of which shall be valid unless made in writing and signed by a person duly authorised by the Auctioneer. In these conditions "the Auctioneer" shall be the company or firm or person, or his or their servant or agent, who has agreed to auction any lot. By making a bid for any lot, the person making the bid warrants that he has read, makes his bid upon and agrees to be bound by these Conditions, and further warrants that he has due authority and capacity to make the bid, and binds both himself and any employer or principal to honour any contract resulting there from. Any bid shall be deemed to be an offer by the buyer (a term used herein as including the bidder and any principal or employer of the bidder) to purchase any lot tendered upon these Conditions alone.

3. The Auctioneer tenders any lot for sale as agent for and on behalf of the person from or through whom instructions for sale have been received (the Seller) and not on the Auctioneer's own behalf. The sale of any lot shall be concluded and binding at the moment when the lot is knocked down. The highest bid will be accepted save in exceptional circumstances, such circumstances to be determined by the Auctioneer whose decision shall be unchallengeable.

4. The Auctioneer shall have the sole and exclusive right at the site of the auction to determine all matters whatsoever concerning the conduct and/or effect of any auction sale or purported sale and without prejudice to the generality of the foregoing, he shall be entitled to resolve disputes between bidders, to reject any bid, to withdraw, divide or consolidate any lot or lots and he will be entitled to bid on the Sellers behalf. He will further be entitled to require proof of identity and/or of authority from any bidder.

5. The buyer must forthwith identify himself and any principal or employer, together with appropriate means of identification, to the Auctioneer, his servants or agents and if required to do so must pay 25 per cent of the sale price forthwith by way of deposit. The total sale price, less any such sum, must be paid to the Auctioneer at his office or elsewhere as he may direct. Payment in full shall be deemed not to have occurred until any negotiable instrument has been honoured in full (or cash has been paid) such payment to be made within the time specified in the sale notes or in default of the specification by 5'o clock pm on the day of the auction or on the next complete working day (excluding Saturdays). Time of payment shall be of the essence. The buyer shall not be entitled to remove any lot from it's position at the time of sale until the purchase price of that and any other lot purchased at the auction has been paid in full and in default of payment as aforesaid the Auctioneers shall have a lien upon all lots purchased by the buyer during the same auction and shall be entitled to rescind the sale in respect of any lot or lots for which full payment is not made in due time, forfeit any deposit paid in respect of them, and resell the same without any right of compensation in the buyer. The Auctioneer will also be entitled to charge interest upon any unpaid balance at the rate of 1 per cent above Base Rate from time to time and to charge for storage arising after the time for removal at the rate of 25 per cent per annum of the sale price until he elects to rescind the sale, if at all, which election he may make at any time after such non-payment.

6. The title to any lot shall remain with the Seller until the full sale price and any storage and interest charges have been paid to the Auctioneer, but the risk of damage to or loss of the lot by whatsoever cause and in whatsoever circumstances shall be transferred to the buyer upon the sale.

7. The Auctioneer warrants that he will only sell lots which he believes to be owned by the Seller or to which the Seller will be able to pass a good title but should it transpire that the Seller's title to any lot is defective or that the Seller cannot pass a good title to the buyer, the Auctioneer shall be under no obligation to the buyer, other than to use his best reasonable endeavours (short of litigation), to procure the transfer of a good title to the buyer and to assist the buyer in exercising any remedies that he may have against the Seller.

8. The Buyer shall remove any lot for which he has paid in full plus other charges, if any, by the time for removal, which shall be either the time for payment or the time stated in any sale notes of the Auctioneer, whichever shall be the later, but provided that no lot shall be removed without the Auctioneers express written consent while the Auction is continuing. The buyer shall be responsible for the removal of the articles and such removal must be carried out safely and lawfully. Flame cutting, the use of explosives or any other potentially hazardous or inflammatory process shall not be permissible at the site without express written consent. The buyer agrees to insure against and to indemnify the Auctioneer and the Seller against any and all claims arising in respect of injury or damage to person or property, whether real or personal, caused by or in connection with the acts or omissions of the buyer, whether caused by himself, his servants or agents or his principals or employer. Buyers must insure against these risks.

9. All conditions and warranties as to the condition, quality, description or fitness for any purpose whatsoever of any lot sold by the Auctioneer are hereby expressly excluded. Neither the Auctioneer nor the Seller will be bound by or liable for any representation of any kind whatsoever, in however or howsoever made. Neither the Auctioneer nor the Seller shall be liable for any loss or damage whether caused by negligence or otherwise of either or both of their servants or agents and without prejudice to the generality of the foregoing neither the Auctioneer nor the Seller shall be liable for any loss of profit, business or production or similar or other loss whether direct or indirect or consequential, however caused. In the circumstances any potential buyer should rely solely and exclusively upon his own inspection of any lot and should not treat statements made in sale particulars or, before and during the auction by the Seller or the Auctioneer either as representations or to be relied upon. N.B. a sale by auction is not a consumer sale. Sale of Goods Act 1893 section 55(7) and Unfair Contract terms Act 1977 section 12(2). No vehicle is warranted or held out to be roadworthy and no lot is warranted or held out to be merchantable or safe for use or complying with statutory requirements for use, display or movement. The Auctioneer, his servants and agents have no authority to make representations.

10. The buyer hereby undertakes to ensure that any lot he purchases will be used, moved or displayed whether at the site of the auction or elsewhere only when he has ensured that such use and/or movement and/or display is lawful and safe.

11. Should a buyer, by himself, his servants or agents cause damage in any way to the site of the auction or damage to or loss of any lot thereat, the Auctioneer shall be entitled to exercise a lien in respect of any and all lots purchased by the buyer until such damage or loss has been paid for in full, whether or not the lots or any of them have been paid for in full, such loss and damage to be assessed by the Auctioneer whose decision shall be final and unchallengeable. The Auctioneer's assessed sum shall be paid by the buyer upon receipt of invoice therefore and payment shall be made forthwith, time being of the essence.

12. If before title to any lot has passed to the buyer thereof, the buyer being an individual, dies, enters into a composition or arrangement for the benefit of his creditors or has a Receiving Order in Bankruptcy made against him or, being a body corporate, has a Receiver or a Receiver and Manager appointed or goes into liquidation or enters into a composition or arrangement for the benefit of it's creditors, then contract for the sale of such lot shall be automatically and without notice rescinded unless the Auctioneer elects otherwise within 2 working days of written notice of such an event. Upon rescission, any deposit paid by the buyer shall be forfeit and the Auctioneer shall be entitled to exercise the rights set out in clause 4.

13. If a buyer is permitted to take possession of any lot before the full sale price has been paid, the Seller and/or Auctioneer shall be entitled to enter upon any premises of the buyer or under his control in order to repossess such lot.

14. If, before title passes to the buyer under these Conditions, the buyer nevertheless purports to resell or otherwise dispose of the lot or any interest therein, the buyer shall hold the proceeds of such sale or other disposition upon trust for the Auctioneer and the Seller jointly until title passes to the Buyer under these Conditions if at all, and in the meantime the buyer shall not deal with, charge or dispose of such proceeds except with the written consent of the Seller, or of the Auctioneer.

15. These Conditions shall be construed in accordance with and governed by English law save in respect of sales in Scotland and Northern Ireland which shall be construed in accordance with and Governed by Scottish and Northern Irish law respectively.



**THE
SALE**

DDM
AGRICULTURE